

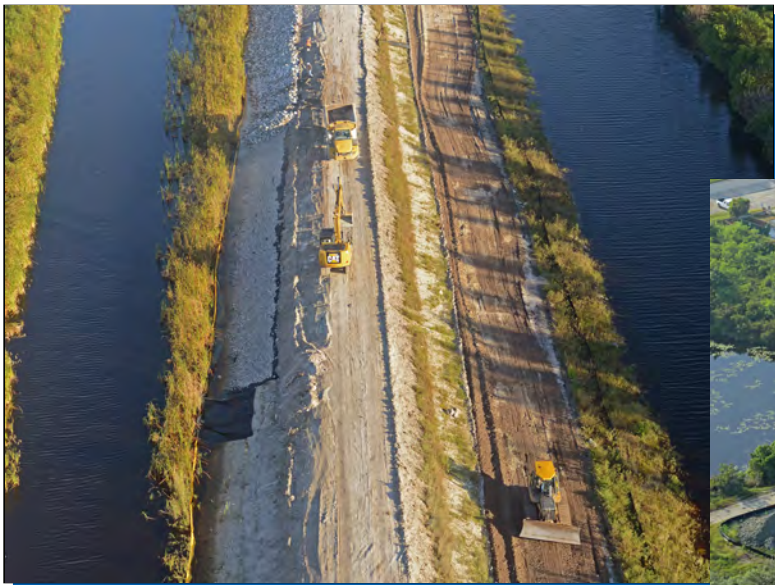
## EAST COAST PROTECTIVE LEVEL L-36 REHAB

Phase 2 - Segments 1, 2, and 3 - Broward County, Florida



**CLIENT** South Florida Water Management District  
3301 Gun Club Road  
West Palm Beach, FL 33406

Contact: Timothy Harper, PE  
Senior Engineer  
(561) 682-6289  
tharper@sfwmd.gov



### PROJECT DESCRIPTION

The South Florida Water Management District (SFWMD) approved three construction contracts (Phase I, II, and III) to strengthen the 38-mile Broward County portion of the East Coast Protective Levee. The levee, which stretches for 105 miles along South Florida's east coast, was designed and constructed to provide critical flood protection for urban areas.

SFWMD operates and maintains nearly 1,800 miles of canals and levees, 25 major pumping stations and about 200 larger and 2,000 smaller water control structures.

### SCOPE OF WORK

Repair and rehabilitation of approximately 8.8 miles of East Coast Protective Levee in Broward County, Florida. Work included construction of a filter berm at the levee toe, access ramps, side slope flattening, rip rap protection and levee top recompacting.

### COMPLETION DATE

2013

### PROJECT COST

\$ 6,587,057