

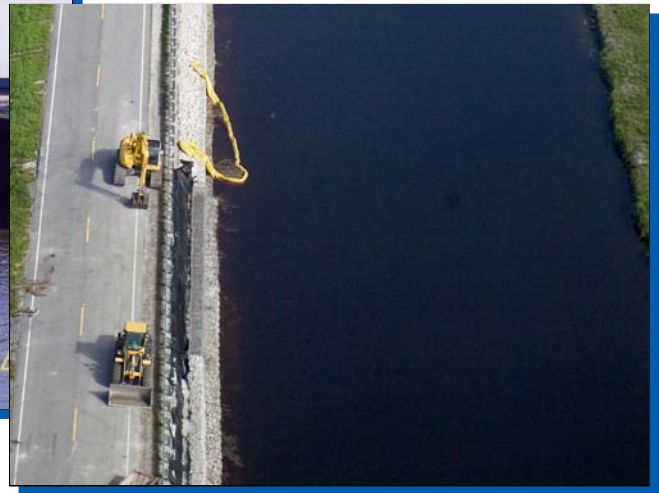
L-12 CANAL BANK REPAIRS

Palm Beach County, Florida



CLIENT South Florida Water Management District
3301 Gun Club Road
West Palm Beach, FL 33406

Contact: Jose Guardiaro
Tel: (561) 682-2594
Fax: (561) 682-6374
jguardia@sfwmd.gov



PROJECT DESCRIPTION

South Florida Water Management District operates and maintains approximately 1,800 miles of canals and levees, 25 major pumping stations and about 200 larger and 2,000 smaller water control structures. After the storms of '04 and '05 ravaged the South Florida canal system, many of these canals were stressed beyond their limits and rehabilitation became critical.

SCOPE OF WORK

The L-12 Canal Bank Stabilization project, located along the southwest bank of L-12, started from west of CR880 and extended approximately 2,840 feet. The repair of the canal banks included removal of existing vegetation, excavation, backfill, installation of gabions, sodding and all other appurtenant and collateral work necessary to complete work required by the contract documents.

COMPLETION DATE

2007

PROJECT COST

\$ 1,178,500